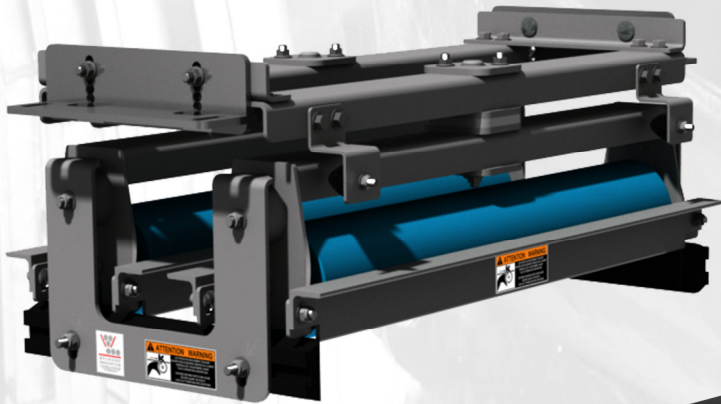




SPAR AC INF

Advantages



- ◆ Specially designed for reversible belt conveyors.
- ◆ Significantly reduces frequency, duration and cost of maintenance operations.
- ◆ Ensures continuous belt alignment.
- ◆ Upside down positioning to avoid rollers and pivot system to clog.



Self-training system for reversible belt conveyor

The SPAR AC INF is a self-training system developed using proven mechanical principles.

The SPAR AC INF ensures reversing belts remain continuously aligned.

The SPAR AC INF comprises a galvanized steel chassis and polyethylene inside sealing panels and guide rails that are in permanent contact with the belt.

✓ May be integrated into new, existing or reversing conveyors.

✓ Adapts to your production needs:

- Belt speed of up to 600'/min
 - Available for belt widths up to 48"
- SPAR AC INF is made to order

Contact us if your application does not meet the specifications mentioned above.



Design

The SPAR AC INF is built to last. The sturdy and resistant materials used in its construction guarantee its longevity, as well as extend the lifespan of your installations.

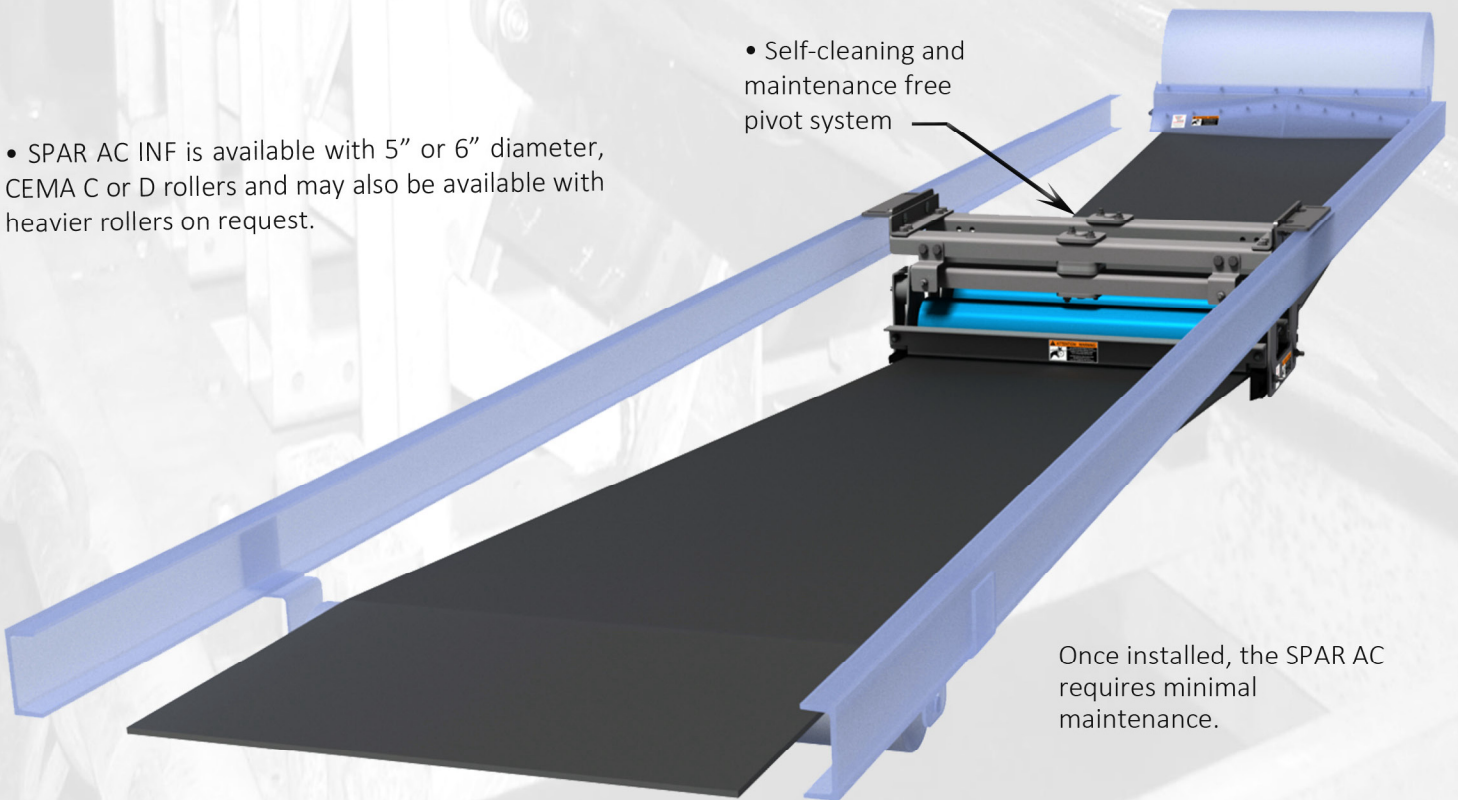


• Polyethylene guide rails align the belt permanently

• Galvanized steel chassis

• SPAR AC INF is available with 5" or 6" diameter, CEMA C or D rollers and may also be available with heavier rollers on request.

• Self-cleaning and maintenance free pivot system



Once installed, the SPAR AC requires minimal maintenance.

We do not warrant that our guards will meet all local codes. It is the responsibility of the end user to have them checked by a local inspector.